

12"

SUPERIOR 1250

AT A GLANCE



SIZE
381 - 660mm
(17 1/4" - 26")



SHANK
DHD 112S

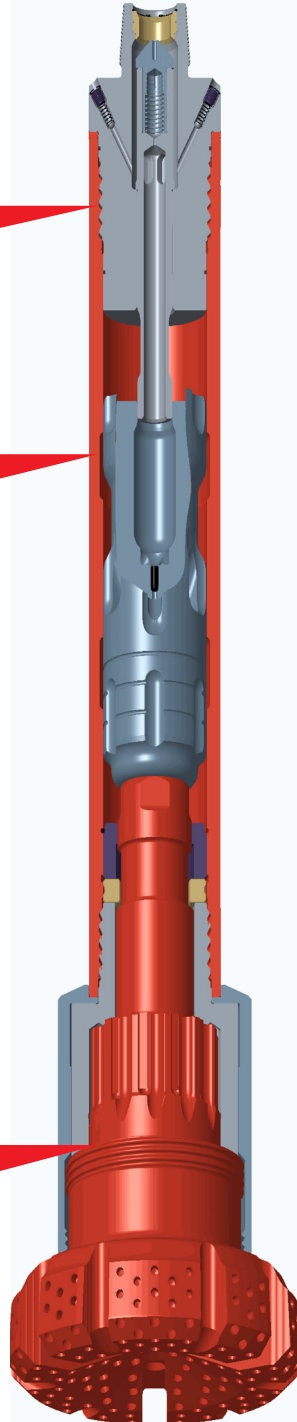


AIR PRESSURE
100 - 435psi
(7 - 30 bar)

Variable bypass porting has been added to the top adaptor

A variable live air bleed to allow greater additives to increase up-hole velocity.

The Bit Catcher System has a specially designed chuck and drill bit arrangement.



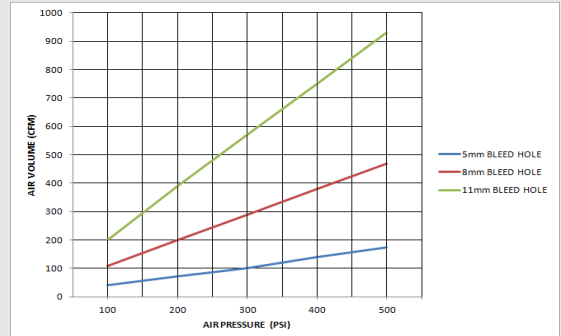
SUPERIOR 1250

The Superior 1250 accepts DHD112S shank bits and is equipped with an oversized chuck to accommodate this shank.

The oversized chuck protects the cylinder and prolongs life. The Superior 1250 has a drive pins arrangement to prevent metal to metal contact thereby minimising spline wear and damage, which can result in drill bit shank failure.

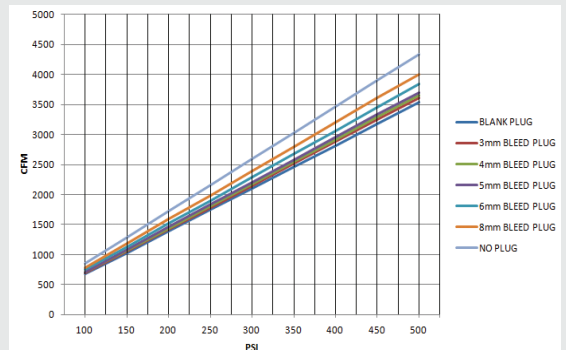
Air Consumption

Bypass Top Adaptor



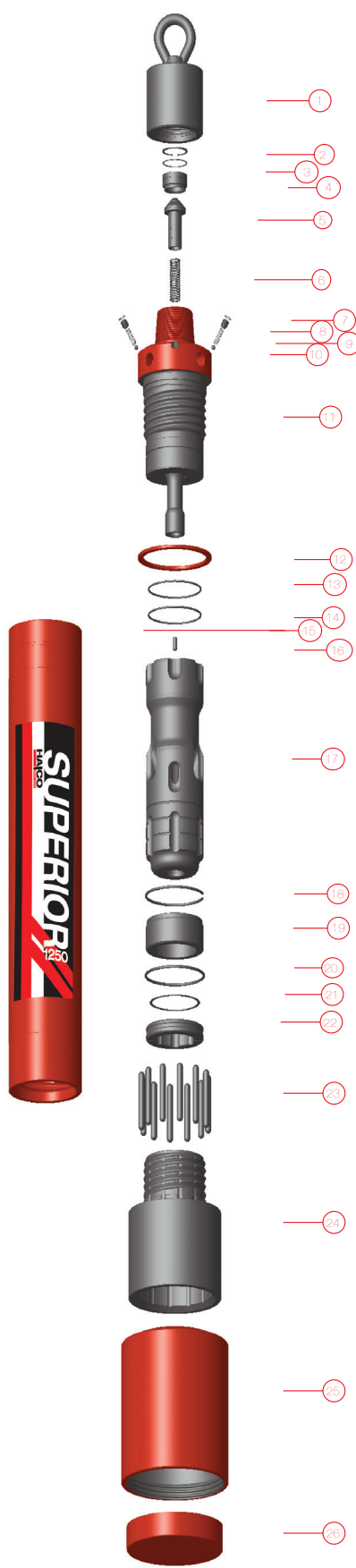
Note: The air volumes quoted above are based upon one bleed plug.

Hammer



Figures are based on theoretical data.

UNITED KINGDOM
Halco Rock Tools Limited
Armytage Road, Brighthouse
West Yorkshire
Tel: +44 (0)1422 399900
www.halcorocktools.com



Hammer Overview

| Hammer Type | Superior 1250 |
|----------------------------|--------------------|
| Shank | DHD 112S |
| Top Thread | 6 5/8" API Reg Pin |
| Flat Hammer Size | 273mm (10.748") |
| Weight | 614 Kg |
| Outside Diameter | 273mm (10.748") |
| Make Up Length | 1684mm (49.724") |
| Recommended Minimum Thrust | 1600 Kg (3520 lbs) |
| Recommended Maximum Thrust | 3500 Kg (7700 lbs) |

Parts List

| | | Maintenance Kits | | |
|------|--------------------|------------------|------------|----------|
| | | Service Kit | Repair Kit | Life Kit |
| Item | Description | SK93 | RK151 | LK15 |
| 1 | Lifting Cap | - | - | - |
| 2 | Circlip | - | 1 | - |
| 3 | O'Ring | 2 | 2 | - |
| 4 | N.R.V. Seat | - | 1 | - |
| 5 | N.R.V. | - | 1 | - |
| 6 | N.R.V. Spring | - | 1 | - |
| 7 | Circlip | - | 4 | - |
| 8 | Bleed Plugs | - | 4 | - |
| 9 | Spring | - | 4 | - |
| 10 | Ball Bearing | - | 4 | - |
| 11 | Top Adaptor | - | - | 1 |
| 12 | Spacer | - | 1 | - |
| 13 | O'Ring | 2 | 2 | - |
| 14 | O'Ring | 2 | 2 | - |
| 15 | Cylinder | - | - | 1 |
| 16 | Bleed Plug | 1 | 1 | - |
| 17 | Piston | - | - | 1 |
| 18 | Snap Ring | - | 1 | - |
| 19 | Guide Bush | - | - | - |
| 20 | O'Ring | 2 | 2 | - |
| 21 | O'Ring | 2 | 2 | - |
| 22 | Bit Retaining Ring | - | 1 | - |
| 23 | Drive Pins | - | 12 | - |
| 24 | Chuck | - | 1 | - |
| 25 | Shroud | - | - | - |
| 26 | End Cap | - | - | - |

Drill Bits

| Part | Diameter | Face | Buttons | | Over | Weight |
|----------------|----------|------|---------|------|-----------|-----------|
| Number | mm | Inch | Design | Type | Qty / Dia | Size (Kg) |
| DHD112S | | | | | | |

Drill Bits for the DHD112S shank are available upon request.

Additional drill bit configurations are available upon request.

